

6

5

4

3

2

1

MATERIAL AND FINISH:

Insulator: Nylon 66, color black, UL 94V-0 rated
Positive contact: Beryllium Copper, Nickel plated
Negative contact: Brass, Nickel plated

ELECTRICAL SPECIFICATIONS

Voltage & current rating: 3 VDC, 120 mA
Inter contact resistance: 100 mohm max. at both the positive and negative terminals when measured between the terminals of the PDI-2425 at 1 KHz with low drainage (100mA max.)
Insulation resistance: 100 Mohm min. with 500 VDC applied between the positive and negative terminals.
Dielectric withstanding voltage: 500 VDC applied for one minute between the positive and negative terminals.

MECHANICAL SPECIFICATIONS

Battery insertion force: 0.3kg-1.0kg for the initial battery insertion
Spring pressure: 50g min. initial contact force at positive and negative terminals
Terminal strength: Electrical and mechanical performance specifications should still be satisfied without terminal cracking or excessive play, with a static load of 1kg applied to the terminals in any direction; however, the terminals may bend.

RoHS
COMPLIANT

REVISIONS
CHANGE
DATE
REV
CHNG
CHK
APPR

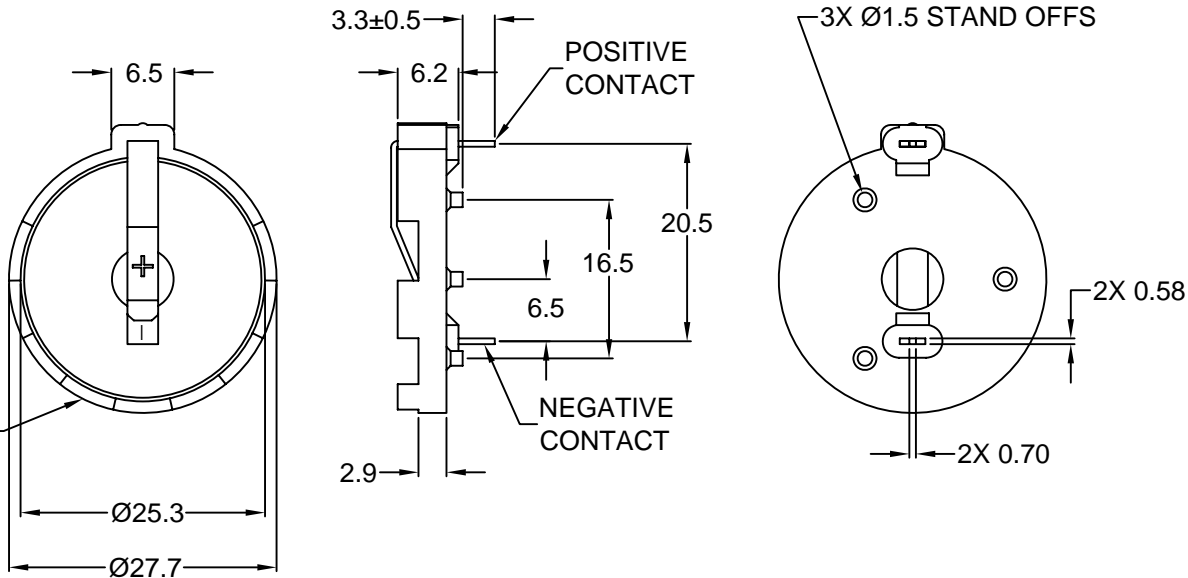
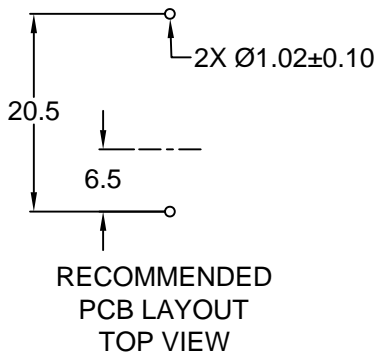


TABLE 2: BATTERY HOLDER SELECTION GUIDE

PART NUMBER	GE SANYO VARTA	UNION CARBIDE (EVEREADY)	PANASONIC RAYOVAC	SAFT LM 2425	DURACELL DL 2430 DL 2420
PDI-2425-0	CR 2430				
PDI-2425-1	CR 2420				

TABLE 1: CROSS REFERENCE CHART

PDI PART NUMBER	NOMINAL BATTERY SIZE	MEMORY PROTECTION DEVICES(MPD)	SAFT	KEYSTONE	S.E.I.
PDI-2425-0	(2425) 24.0/25.0 x 2.5/3.0	BH 1000	HLD2425	105	2S2425-0

TOLERANCE
UNLESS OTHERWISE SPECIFIED

X ± 1
X.X ± 0.4
X.XX ± 0.20

DRAWN BY	GQ	DATE:	03/22/02
CHECK BY	TD	DATE:	05/08/02
APPR BY	PB	DATE:	05/08/02

Power Dynamics, Inc.
Phone: 973 560-0019 Whippany, New Jersey Fax: 973 560-0076

PART: COIN CELL
BATTERY HOLDER

PART #: PDI-2425-X		SHEET 1 of 1
SIZE: A	ALL DIMENSIONS FOR REFERENCE ONLY DIMENSIONS ARE IN MILLIMETERS	
SCALE: NTS	REV:	